



Parkhill Road NW3

Parkheath  
*Sold on Service*





# Parkhill Road, NW3

## Asking Price

### £850,000, Leasehold

#### Camden Band E

- A fabulous, well proportioned 2 double bedroom apartment
- Well maintained communal gardens
- Attractive semi detached period conversion
- Entire second floor (top) over 700 sq ft
- Great natural light throughout
- Bright 18ft reception
- Separate 10ft kitchen
- 14ft rear facing main bedroom with built in wardrobes
- 125 years from 1995
- Close to Belsize Park amenities as well as Hampstead Heath

Belsize Park  
208 Haverstock Hill  
NW3 2AG  
Sales 020 7431 1234  
Lettings 020 7431 3104  
nw3@parkheath.com

South Hampstead  
8a Canfield Gardens  
NW6 3BS  
Sales 020 7625 4567  
Lettings 020 7644 0800  
nw6@parkheath.com

West Hampstead  
192 West End Lane  
NW6 1SG  
Sales & Lettings  
Tel 020 7794 7111  
192@parkheath.com

Kentish Town  
148 Kentish Town Rd  
NW1 9QB  
Tel 020 7485 0400  
kt@parkheath.com

Kensal Rise  
54-56 Chamberlayne Rd  
NW10 3JH  
Tel 020 8960 4845  
kensal@parkheath.com

Property Management  
148 Kentish Town Rd  
NW1 9QB  
020 7433 6174  
pm@parkheath.com

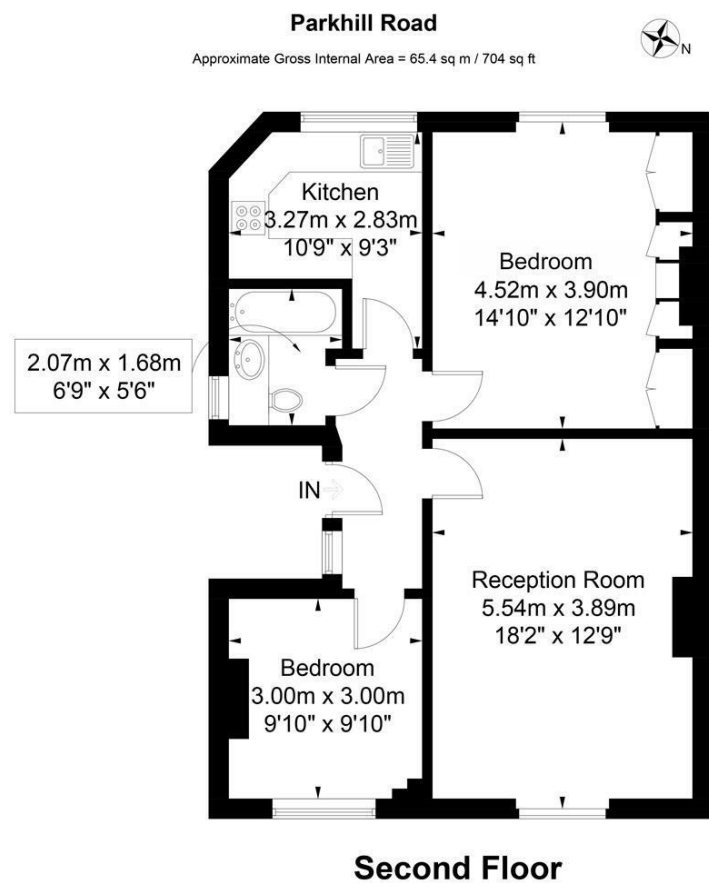
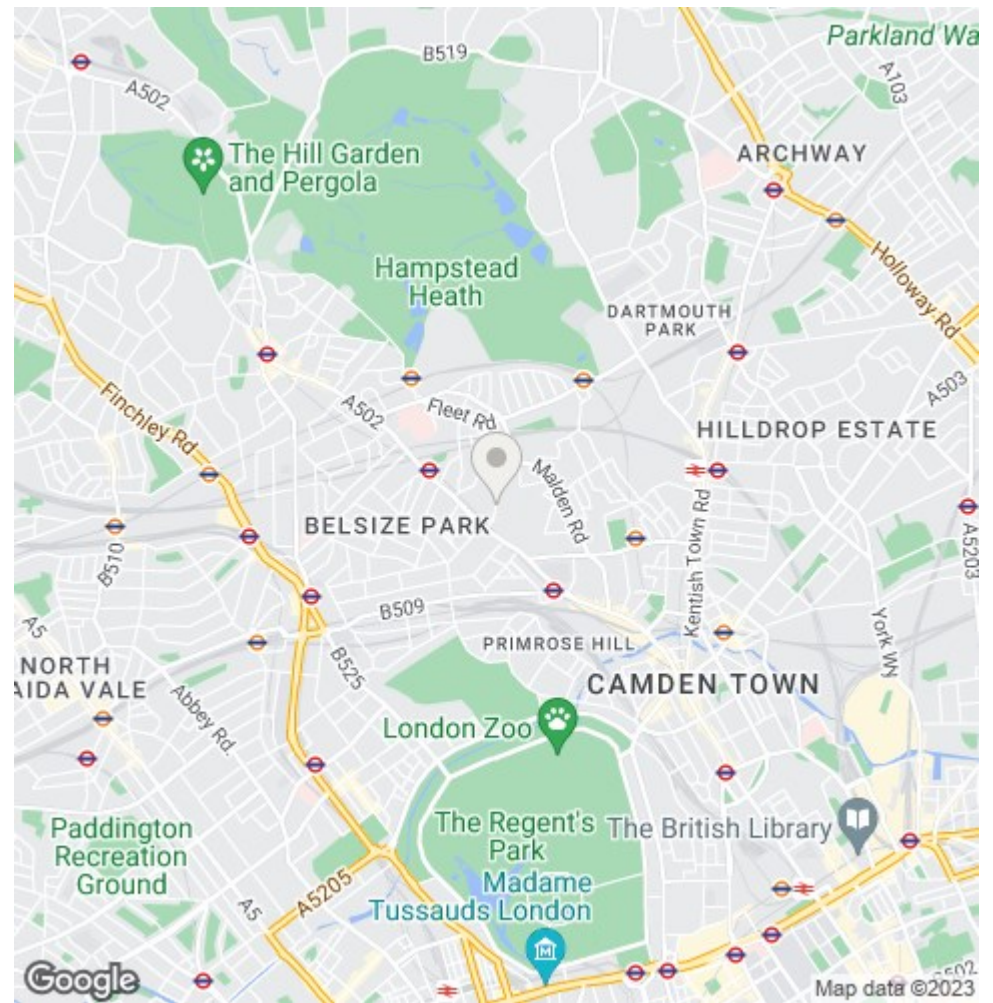


Illustration for identification purposes only, measurements are approximate, not to scale. FloorplansUsketch.com © 2018 (ID406005)  
ELLIE CLAIRE PHOTOGRAPHY LTD



The particulars do not constitute part of an offer or contract. The particulars, including text, photographs and plans, are for the guidance only of prospective purchasers/tenants and must not be relied upon as statements of fact. The descriptions provided therein represent the opinion of the author and whilst given in good faith should not be construed as statements of fact. Nothing in these particulars shall be deemed a statement that the property is in good condition or otherwise or that any services or facilities are in good working order. All measurements are approximate